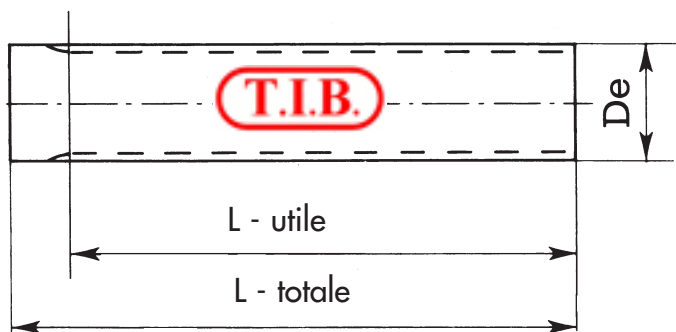


# BARRE DENTATE PASSO METRICO "T"



N.B. Le barre passo T 2.5 - T 5 - T 10 vengono costruite solo in Alluminio adatto per l'ossidazione dura a spessore.

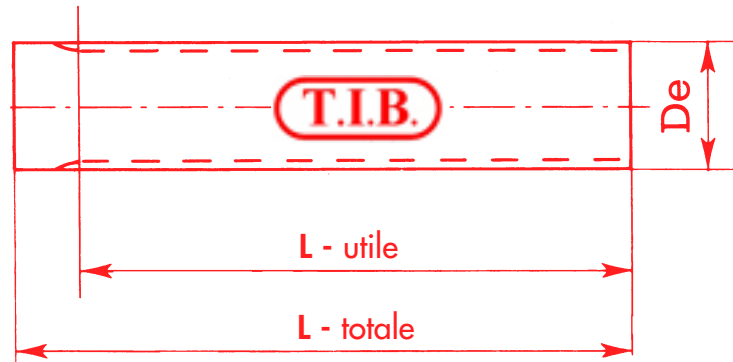
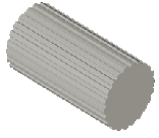
**A richiesta si costruiscono pulegge e barre passo T20**

DESCRIZIONE	N. denti	De ESTERNO	L UTILE	L TOTALE
T5-10	10	15.05	125	140
T5-11	11	16.65	125	140
T5-12	12	18.25	125	140
T5-13	13	19.85	125	140
T5-14	14	21.45	140	140
T5-15	15	23.05	140	140
T5-16	16	24.60	140	140
T5-17	17	26.20	140	140
T5-18	18	27.00	140	140
T5-19	19	29.40	140	140
T5-20	20	31.00	160	160
T5-21	21	32.70	160	160
T5-22	22	34.15	160	160
T5-23	23	35.85	160	160
T5-24	24	37.40	160	160
T5-25	25	38.95	160	160
T5-26	26	40.60	160	160
T5-27	27	42.20	160	160
T5-28	28	43.75	160	160
T5-29	29	45.35	160	160
T5-30	30	46.95	160	160
T5-32	32	50.10	160	160
T5-34	34	53.25	160	160
T5-35	35	54.85	160	160
T5-36	36	56.45	160	160
T5-37	37	58.06	160	160
T5-38	38	59.65	160	160
T5-40	40	62.85	160	160
T5-42	42	66.00	160	160
T5-44	44	69.20	160	160
T5-45	45	70.80	160	160
T5-46	46	72.40	160	160
T5-48	48	75.55	160	160
T5-50	50	78.75	160	160
T5-60	60	94.65	160	160
T5-72	72	113.75	160	160
T5-80	80	126.48	160	160
T5-90	90	142.40	160	160
T5-100	100	158.31	160	160

DESCRIZIONE	N. denti	De ESTERNO	L UTILE	L TOTALE
T2.5-10	10	7.45	50	75
T2.5-12	12	9.00	50	75
T2.5-13	13	9.80	50	75
T2.5-14	14	10.60	50	75
T2.5-15	15	11.40	50	75
T2.5-16	16	12.20	50	75
T2.5-17	17	13.00	50	75
T2.5-18	18	13.80	50	75
T2.5-19	19	14.60	90	120
T2.5-20	20	15.40	90	120
T2.5-21	21	16.20	90	120
T2.5-22	22	17.00	125	140
T2.5-24	24	18.55	125	140
T2.5-26	26	20.15	125	140
T2.5-27	27	20.95	125	140
T2.5-28	28	21.75	125	140
T2.5-29	29	22.55	125	140
T2.5-30	30	23.35	125	140
T2.5-32	32	24.95	125	140
T2.5-34	34	26.55	125	140
T2.5-35	35	27.35	132	140
T2.5-36	36	28.10	132	140
T2.5-38	38	29.70	140	140
T2.5-40	40	31.30	140	140
T2.5-42	42	32.90	140	140
T2.5-44	44	34.50	140	140
T2.5-45	45	35.30	140	140
T2.5-48	48	37.70	140	140
T2.5-50	50	39.29	160	160
T2.5-60	60	47.25	160	160
T2.5-65	65	51.20	160	160
T2.5-70	70	55.20	160	160
T2.5-72	72	56.80	160	160
T2.5-90	90	71.12	160	160
T2.5-100	100	79.08	160	160

DESCRIZIONE	N. denti	De ESTERNO	L UTILE	L TOTALE
T10-10	10	29.98	140	140
T10-11	11	33.16	140	140
T10-12	12	36.35	140	140
T10-13	13	39.55	140	140
T10-14	14	42.70	160	160
T10-15	15	45.90	160	160
T10-16	16	49.10	160	160
T10-17	17	52.25	160	160
T10-18	18	55.45	160	160
T10-19	19	58.65	160	160
T10-20	20	61.80	160	160
T10-21	21	65.00	160	160
T10-22	22	68.15	160	160
T10-23	23	71.35	160	160
T10-24	24	74.55	160	160
T10-26	26	80.90	160	160
T10-28	28	87.25	160	160
T10-30	30	93.65	160	160
T10-32	32	100.00	160	160
T10-34	34	106.40	160	160
T10-36	36	112.75	160	160
T10-38	38	119.10	160	160
T10-40	40	125.45	160	160
T10-45	45	141.40	160	160
T10-48	48	150.95	160	160
T10-60	60	189.15	160	160
T10-72	72	227.29	160	160

# BARRE "AT" PER CINGHIE DENTATE PASSO METRICO "AT"



N.B. Le barre passo AT 5 - AT 10 vengono costruite solo in Alluminio adatto per l'ossidazione dura a spessore.

## AT5 (Passo 5 mm)

## AT10 (Passo 10 mm)

DESCRIZIONE	N. denti	De ESTERNA	L UTILE	L TOTALE	DESCRIZIONE	N. denti	De ESTERNA	L UTILE	L TOTALE
AT5-12	12	17.85	140	140	AT10-15	15	45.90	160	160
AT5-13	13	19.45	140	140	AT10-16	16	49.140	160	160
AT5-14	14	21.05	140	140	AT10-18	18	55.45	160	160
AT5-15	15	22.65	140	140	AT10-19	19	58.65	160	160
AT5-16	16	24.20	140	140	AT10-20	20	61.80	160	160
AT5-18	18	27.40	140	140	AT10-21	21	65.00	160	160
AT5-19	19	29.00	140	140	AT10-22	22	68.20	160	160
AT5-20	20	30.60	160	160	AT10-23	23	71.35	160	160
AT5-21	21	32.30	160	160	AT10-24	24	74.55	160	160
AT5-22	22	33.85	160	160	AT10-25	25	77.75	160	160
AT5-23	23	35.45	160	160	AT10-26	26	80.90	160	160
AT5-24	24	37.00	160	160	AT10-28	28	87.25	160	160
AT5-25	25	38.55	160	160	AT10-30	30	93.65	160	160
AT5-26	26	40.20	160	160	AT10-32	32	100.00	160	160
AT5-28	28	43.25	160	160	AT10-34	34	106.40	160	160
AT5-30	30	46.55	160	160	AT10-36	36	112.75	160	160
AT5-32	32	49.70	160	160	AT10-38	38	119.10	160	160
AT5-34	34	52.85	160	160	AT10-40	40	125.45	160	160
AT5-36	36	56.05	160	160	AT10-42	42	131.85	160	160
AT5-38	38	59.25	160	160	AT10-44	44	138.20	160	160
AT5-40	40	62.45	160	160	AT10-46	46	144.55	160	160
AT5-42	42	65.60	160	160	AT10-48	48	150.95	160	160
AT5-44	44	68.80	160	160	AT10-52	52	163.65	160	160
AT5-46	46	72.00	160	160	AT10-56	56	176.40	160	160
AT5-48	48	75.15	160	160	AT10-60	60	189.15	160	160
AT5-52	52	81.55	160	160					
AT5-56	56	87.90	160	160					
AT5-60	60	94.25	160	160					
AT5-64	64	100.65	160	160					
AT5-72	72	113.35	160	160					

A richiesta si costruiscono pulegge e barre passo AT20